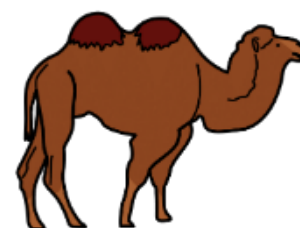
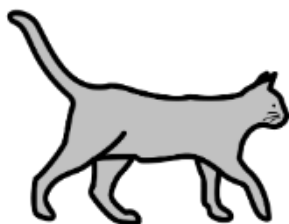
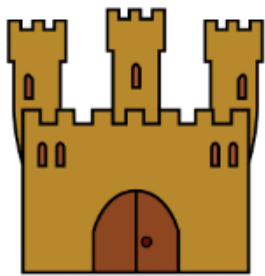


ſ - position initiale (images)



ſ - position initiale (photos)



ç - position initiale (mots)

château

chapeau

chaussette

chapiteau

chat

chocolat

chaise

chien

chou-fleur

champignon

cheval

chèvre

chouette

chaussure

chevalier

chips

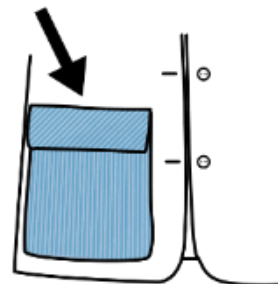
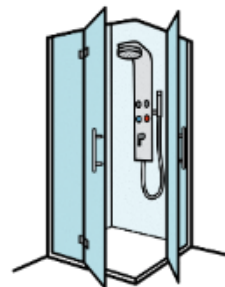
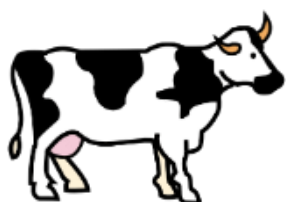
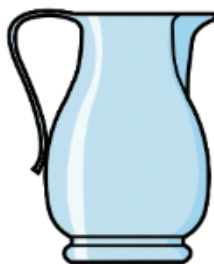
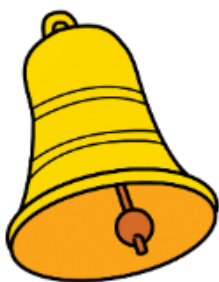
chauve-souris

chaîne

chemise

chameau

ſ - position finale (images)



ſ - position finale (photos)



ſ - position finale (mots)

louche

cloche

ruche

mouche

vache

peluche

pioche

douche

hache

bouche

autruche

poche

buche

capuche

perruche

pêche

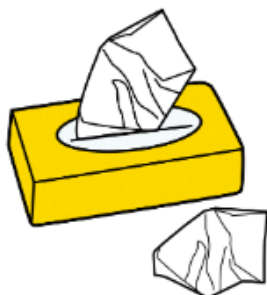
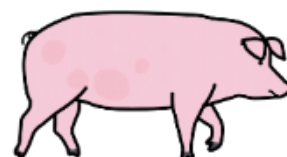
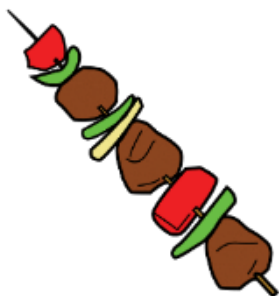
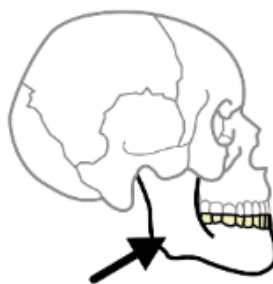
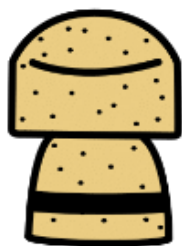
fourche

bûche

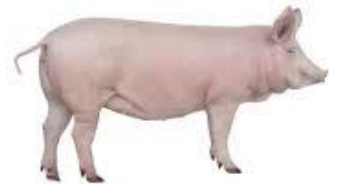
pistache

moustache

∫ - position médiane (images)



ſ - position médiane (photos)





ʃ - position médiane (mots)

marcher

bouchon

parachute

artichaut

loucher

se moucher

mâchoire

échelle

brochette

manchot

écharpe

cochon

mouchoir

boucher

pêcher

pêcheur

écharde

cocher

crochet

fourchette